

# **JOIN 47 INC COMPENSATION PLAN**

The 47-compensation plan was designed by its owners and multiple top comp plan experts in the industry. Together their intent was to create one of the best plans in today's network marketing industry. We put the independent representative (IR) first! The owners, prior Master Distributors and top leaders of multiple companies understand how important it is to pay the field well while at the same time have a comp plan that is very well-balanced front, middle, and back end. A plan that teaches, drives behaviors, and encourages teamwork. A One team One Dream Concept! There are 8 different ways to get paid with additional rewards and bonuses.

- 1) **RETAIL/PREFERRED CUSTOMER SALES** 25%
- 2) **FIRST ORDER BONUSES** Up to \$200(USD)
- 3) **DREAM TEAM CODED TEAMBUILDING BONUS**  
\$100(USD) Unblocked to Unlimited Levels
- 4) **DUAL TEAM CHECK MATCH** Seven Levels Starting  
at 20%
- 5) **DUAL TEAM** Commissions Up to \$50,000 per  
Week
- 6) **LIFESTYLE BONUS** Monthly \$200 to \$2500
- 7) **PACESETTER** Paid Monthly
- 8) **3 AND FREE PRODUCT BONUS**

1) **Retail Sales** product price is \$84.95 (30 Day Supply, \$2.83 Per Serving)

Retail orders from your website are paid weekly. IRs will earn 25% commission on all orders that month. To earn retail commissions, you must produce a minimum of 50 BV personal monthly business volume (BV), personal Autoship Purchase is optional.

Preferred Customers are people that have set up a Autoship Purchase, and in doing so receive Independent Rep (IR) discount pricing. Retail and Preferred Customers do not participate in the comp plan; however, they do fall into the Dual Team for the IR BV calculations. IRs will receive 25% commission on personal preferred customers.

Become An Independent Rep (IR) \$15.95 Monthly Fee

Optional Packages (30-day Supply)	Cost (USD)	Business Volume (BV)	Leadership Rank Benefit
Basic	1 Package \$59.95	50 BV	Affiliate Qualified as an Independent Representative (IR)
Starter	3 Packages \$159.95	100 BV	VIP Executive Qualified as an Independent Representative (IR)
Advanced	6 Packages \$299.95	150 BV	Premier Executive Qualified as an Independent Representative (IR)
Business Builder	15 Packages \$647.00	400 BV	National Executive Qualified as an Independent Representative (IR)
Career Builder	30 Packages \$1199.95	800 BV	Senior Executive

## 2) **First Order Bonuses** - Paid Weekly

<b>Optional Packages (30-day Supply)</b>	<b>Cost (USD)</b>	<b>Business Volume (BV)</b>	<b>First Order Bonus</b>	<b>Dream Team Bonus</b>	<b>Dual Team BV Allocation</b>
Basic	1 Package \$59.95	50 BV	\$20	N/A	20 BV
Starter	3 Packages \$159.95	100 BV	\$40	N/A	40 BV
Advanced	6 Packages \$299.95	150 BV	\$60	N/A	60 BV
Business Builder	15 Packages \$647.95	400 BV	\$100	\$100	100 BV
Career Builder	30 Packages \$1199.95	800 BV	\$200	\$100	200 BV

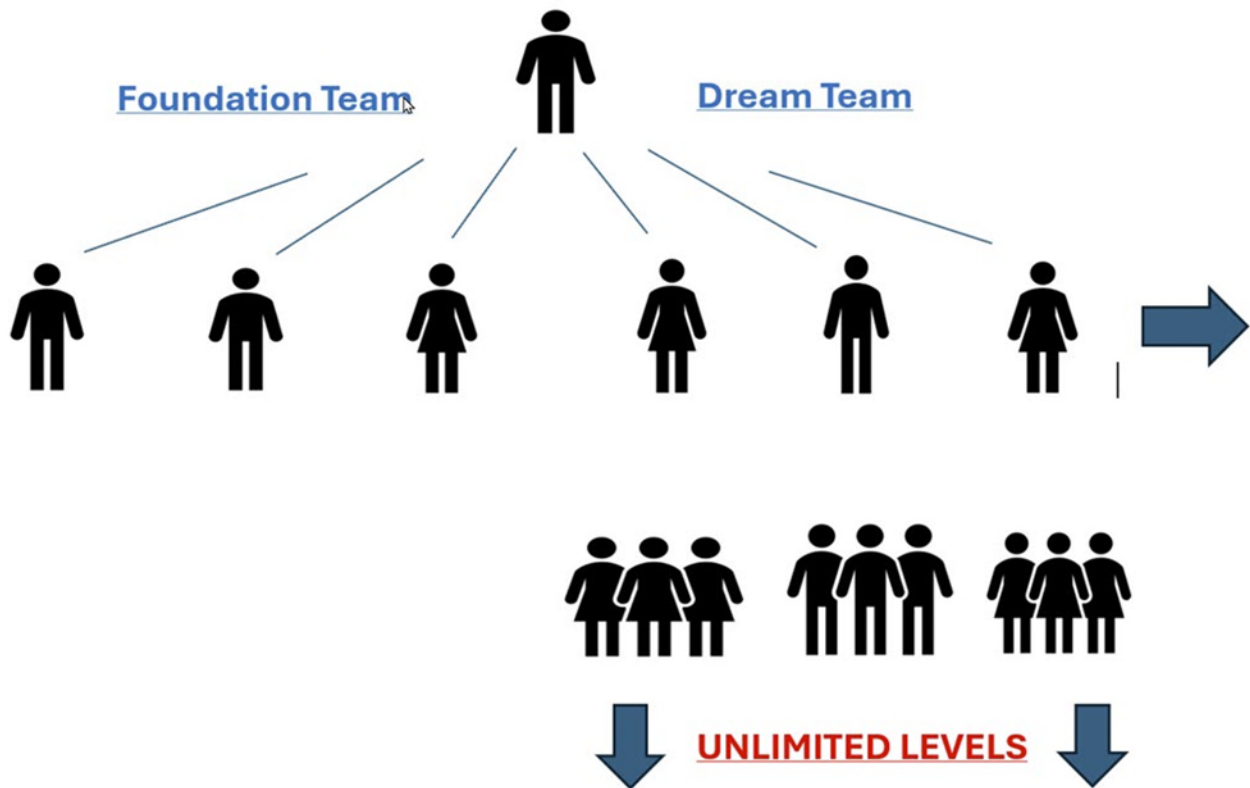
There is NO differential upgrade. If you decide to purchase an optional Basic, Starter, or Advanced Pack as your first order, you may choose to purchase the Business Builder Pack or Career Builder Pack if you would like to take advantage of the Leadership Rank Benefit to qualify as a National Executive IR. The upgrade is commissionable under the First Order Bonus. Subsequent packages are commissionable in the Dual Team structure. Please note that IRs are not required to purchase any Pack in order to be eligible to achieve or earn any particular rank. Any IR can earn any of the twelve ranks in the compensation plan by satisfying the eligibility criteria for those ranks.

## 3) **Dream Team Building Bonus** - \$100 (USD) Paid Weekly

These \$100 (USD) bonuses are paid on the successful qualification of a new **National Executive IR or Senior Executive IR qualified**. In addition, IR must produce a 100 BV monthly Autoship BV to maintain qualifications for this bonus. **Personal Monthly Autoship Volume is generated by the Autoship Purchases of your personally enrolled Customers, as well as your own optional Autoship purchases.**

Your first **3 (Called a Foundation Team) enrolled and qualified** National Executives or Senior Executive pays \$100 Dream Team Bonus to your first generation upline enroller who is Dream Team qualified IR. After you have successfully achieved qualifying for your first 3 National Executive or Senior Executive IRs, beginning with your 4<sup>th</sup> personally qualified National Executive or Senior Executive, the \$100 Dream Team Bonus will be paid to you.

Same goes for your 5<sup>th</sup> 6<sup>th</sup> 7<sup>th</sup> 8<sup>th</sup> and so on no matter how wide you go. In addition, you will help your Dream Team enrollees create their own Foundation Team of 3 National Executives or Senior Executives IRs in which they will receive the First Order Bonus, and you will receive the \$100 Dream Team Bonus. These bonuses pay down through your Dream Team organization, unlimited debt, UNBLOCKED. Remember in your Dream Team first 3, first 3 (9), first 3 (27) and so on. Once your Dream Team IR has 3 qualified IRs they begin their own Dream Team.



Each IR works to complete their Foundation Team which is coded to an upline Dream Team Enroller creating Teamwork. Remember once a Direct Dream Team enrollee has their 3 qualified IR's they start their own Dream Team coded to them.

#### 4) **Dual Team Check Match** – Paid Weekly

Level	Affiliate	VIP Executive	Premier Executive	National Executive	Senior Executive	Field Leader	Royal Diamond	Legends Club
1	10%	15%	15%	20%	20%	20%	20%	20%
2			10%	10%	15%	15%	15%	15%
3				5%	10%	10%	10%	10%
4				3%	5%	5%	5%	5%
5					3%	3%	3%	3%
6							2%	2%
7								1%

IRs must be qualified by producing a 100 BV monthly through their website to maintain qualification, whether it is personal (optional) or through personal customers. The numbers in the table above refer to the percentage of the check match for the IR on whom you receive a check match. For example, Joe sponsors Tom who is a National Executive on his first level. Tom cycles 5 times this week (in the Dual Team) and is paid \$100 the following Friday. As Tom’s sponsor, Joe will receive a 20% check match of \$20 for helping Tom build his business, acquire retail customers and Preferred Customers, and develop Customer and downline sales.

#### 5) **DUAL TEAM COMMISSIONS**-\$20.00 (USD) Per Cycle Paid Weekly

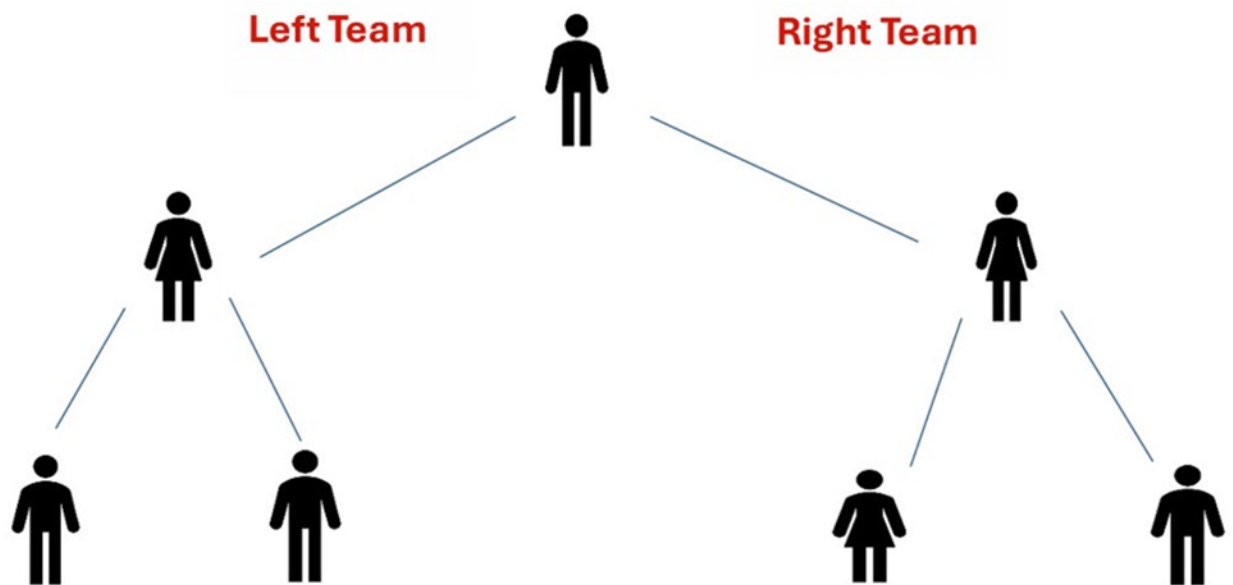
The First Order Bonuses and Dream Team Bonuses are paid out first before any BV is calculated in the Dual Team Cycle Commission structure. The chart below shows the amount of BV from each of the packages that is calculated in the Dual Team Structure.

Packages	Dual Team BV Allocation (First Order Only)	Dual Team BV (Additional Orders) Optional
Basic	20 BV	50 BV
Starter	40 BV	100 BV
Advanced	60 BV	150 BV
Business Builder	100 BV	400 BV
Career Builder	200 BV	800 BV

Any additional product packages or orders purchased after the First Order are calculated in the Dual Team Cycle Commissions structure using 100% of the BV value.

You cycle every time the computer sees 200 BV on your stronger team and 100 BV on your lesser team, with a weekly earnings potential of up to \$50,000 (USD) per week. All Dual Team Cycle Commissions are subject to the IR, reaching **ALL the required qualifications.**

To qualify for Dual Team Cycle Commissions, you are required to personally produce a monthly Autoship of 50 BV or greater and to have enrolled a minimum of (2) IRs- one placed on the right team, one placed on the left team- who each produce a monthly Autoship of 50 BV or greater. If you do not satisfy the Dual Team Cycle Commissions qualification but maintain a minimum 50 BV in a monthly Autoship BV, the computer will automatically accumulate and store unpaid sales volume in your team(s) for future commissions calculations (upon proper qualifications).



200 BV      100 BV

1 CYCLE = \$20.00

Cycle Up To \$50,000 (USD) Per Week!

(Read Rank Requirements And Qualifications)

Leadership Rank (IR)	Monthly Autoship Production BV Required	Minimum # of Personally Enrolled Rank IRs	Minimum Monthly Total BV Lesser Leg Direct	Minimum Monthly Total BV Greater Leg Common	Minimum Monthly 10% BV Direct in Leg Common	Monthly Autoship Personal Auto BV Option
Affiliate	50 BV	2 IRs at 50 BV	N/A	N/A	N/A	N/A
VIP Executive	100 BV	2 Affiliates	500	500	50	100 BV
Premier Executive	100 BV	2 VIP Executives	1,000	1,000	100	100 BV
National Executive	100 BV	2 Premier Executives	2,000	2,000	200	100 BV
Senior Executive	100 BV	3 National Executives	5,000	5,000	500	100 BV
Field Leader	100 BV	3 Senior Executives	15,000	15,000	1500	100 BV
Strategic Leader	100 BV	2 Senior Executives 1 Field Leaders	30,000	30,000	3000	100 BV
Executive Partner	100 BV	1 Senior Executive 2 Field Leaders	100,000	100,000	10,000	100 BV
Diamond	100 BV	3 Field Leaders	250,000	250,000	25,000	100 BV
Blue Diamond	100 BV	4 Field Leaders	500,000	500,000	50,000	100 BV
Black Diamond	100 BV	4 Field Leaders	750,000	750,000	75,000	100 BV
Crown Diamond	100 BV	5 Field Leaders	1,500,000	1,500,000	150,000	100 BV
Legends Club	100 BV	5 Field Leaders	2,000,000	2,000,000	200,000	100 BV

## Dual Team Commissions, Maximum Cycle Earnings, Maximum Check Match Earnings, and Lifestyle Bonus

Leadership Rank	Dual Team Cycle Value	Maximum # Of Dual Team Cycles Per Week	Maximum Dual Team Commission Per Week (USD)	Maximum Dual Team Check Match Per Week (USD)	Lifestyle Bonus (USD) Structured
Affiliate	\$5	5	\$25	\$50	N/A
VIP Executive	\$10	10	\$100	\$100	N/A
Premier Executive	\$10	20	\$200	\$250	N/A
National Executive	\$20	20	\$400	\$500	N/A
Senior Executive	\$20	50	\$1,000	\$1,000	\$200
Field Leader	\$20	100	\$2,000	\$2,000	\$400
Strategic Leader	\$20	200	\$4,000	\$4,000	\$800
Executive Partner	\$20	400	\$8,000	\$8,000	\$1,250
Diamond	\$20	800	\$16,000	Unlimited	\$1,500
Blue Diamond	\$20	1,200	\$24,000	Unlimited	\$2,000
Black Diamond	\$20	1,600	\$32,000	Unlimited	\$2,000
Crown Diamond	\$20	2,000	\$40,000	Unlimited	\$2,500
Legends Club	\$20	2,500	\$50,000	Unlimited	\$2,500

## 6) **Lifestyle Bonus** - Paid Monthly

The Lifestyle Bonus is earned at the rank of National Executive, and continues for ranks above, and is paid to the structured qualified IRs beginning after two consecutive months of maintaining this status. For example, if you become a fully qualified National Executive in the month of April, maintain the structured qualifications of National Executive for the month of May, you will receive your first Lifestyle Bonus in the month of June and every month thereafter that you continue to qualify. Note- if you fall out of rank status you will be given one month grace period to requalify.

## 7) **Pacesetter** - Paid Monthly

A qualified IR person who, 7 days from the time that they enrolled, enrolled 3 Business Builder or Career Packages will receive a one-time Pacesetter 7 Bonus of \$150. An IR who does the same thing in 30 days from the time that they enrolled will receive a one-time Pacesetter 30 Bonus of \$100. In addition, any IR who enrolls 3 new Business Builder or Career Builder Package in any calendar month after the first month will receive a one-time \$50 Bonus. (IRs receiving \$50 Pacesetter bonus in a month after first month must also produce 100 BV month Autoship BV.) **THIS BONUS ONLY APPLIES TO FIRST ORDER IRs, DOES NOT INCLUDE LOWER PACKAGES UPGRADING**

## 8) **3 and Free Program** - Gifted next month

To qualify you must have originally started at the Business Builder or Career Builder Package. The IR must produce a 100 BV Autoship Monthly BV. Any Qualified IR who has 3 or more Retail Customers purchasing 3 or more packages, the IR will receive 3 free packages with their next Monthly Autoship BV production requirement. This also applies to the qualified IR who have 3 preferred customers or more purchasing 3 or more packages.

## **Monthly Autoship BV Production Requirements**

To earn certain Bonuses in the Join47inc Compensation Plan an IR must meet rank requirements, in addition must produce a minimum amount of monthly BV either through the optional monthly Autoship purchase option and/or sell products through their Join47inc

IR website to a retail customer(s) or Preferred Customer program. An equivalent or greater amount of Join47inc product BV under IRs personal account requirements monthly.

- 1) Produce 50 BV per calendar month Autoship BV is required to earn monthly Retail Commissions
- 2) Produce 50 BV per calendar month Autoship BV is required to earn the First Order Bonus on all personally enrolled Basic, Starter, and Advanced Packages. To produce 100 BV per calendar month Autoship BV is required to earn First Order Bonus on all personally enrolled Business Builder or Career Builder Packages.
- 3) Produce 100 BV per calendar month Autoship BV is required to earn the Dream Team Bonus
- 4) Produce 100 BV per calendar month Autoship BV is required to earn Dual Team Cycle Commissions for VIP Executive and above.
- 5) Produce 100 BV per calendar month Autoship BV is required to earn Dual Team Check Matching Bonuses
- 6) Produce 100 BV per calendar month Autoship BV is required to earn Pacesetter Bonuses
- 7) Produce 100 BV per calendar month Autoship BV is required to earn Lifestyle Bonuses
- 8) Produce 100 BV per calendar month Autoship BV is required to participate in the 3 and Free Program

## Carryover BV and Flushing

This is a non-flushing Dual Team plan. Any unused BV that was not eligible for qualification or used to calculate Dual Team Commissions will continue to accumulate in your left and right teams and will be used in future sales cycles when BV and qualifications are achieved. NOTE- BV will only accumulate so long as monthly BV requirements are achieved, if IR does not maintain qualifications extra BV will flush, no exceptions. Join47inc reserves the right to flush unused BV if 12 or more months of inactivity, in addition accumulation of points has a maximum of 1,000,000.

### **JOIN 47 RANK RECOGNITION SYSTEM**

### **THE PATH TO IMPACT, INCOME & INFLUENCE**

Every title in our compensation plan represents growth, leadership, and legacy. Here's your step-by-step journey through the ranks of Join 47 — from your first enrollment to elite leadership.

### **FOUNDATIONAL RANKS**

*Building your base, growing your confidence.*

- 1. Affiliate** Welcome to the movement! You're officially on the map and ready to build.
- 2. VIP Executive** You've taken early action and are laying your foundation for success.
- 3. Premier Executive** Momentum is building. You're enrolling and engaging like a pro.
- 4. National Executive** Your influence is expanding beyond your circle. You're developing reach and rhythm.
- 5. Senior Executive** You've shown consistency and stability. Your team sees you as a rising figure of leadership.

### **LEADERSHIP RANKS**

*From achiever to influencer. These ranks reflect mentorship and duplication.*

- 6. Field Leader** You're now leading others. Small teams are growing under your guidance.
- 7. Strategic Leader** You're thinking like a business builder — developing systems and key partnerships.
- 8. Executive Partner** You've become a cornerstone in the organization. High-volume leadership meets heart-led mentorship.

### **GEMSTONE RANKS**

*The pinnacle of influence, income, and impact.*

- 9. Diamond** You've entered the elite tier. A leader of leaders with a proven track record.
- 10. Blue Diamond** You're building at scale and mentoring other Diamonds. Global Reach Begins.
- 11. Black Diamond** A rare rank. Your leadership leaves a footprint that ripples across the company.
- 12. Crown Diamond** You're a household name within the company. A global builder with unmatched excellence.
- 13. Legends Club** You've built a legacy. This rank is reserved for the iconic few who've shaped the company forever.

**REMEMBER:** Each rank unlocks not just rewards — but reputation. It's not just about what you earn. It's about who you become.

**"We rise by lifting others." – The Join 47 Philosophy!**

### **💰 IR Payment Schedule**

**Weekly payments are paid on Mondays of every week from two weeks prior Sunday 12:01am to Saturday 11:59pm. For example, earnings made during this time period, will be paid not the immediate Monday but two Mondays after that immediate Monday.**

### **🏠 Commissions are paid as follows:**

**Retail Sales, First Order Bonuses, and Dream Team Bonuses are all paid weekly. Dual Team Commissions, Check Matches, Pace Setter Bonuses and Lifestyle Bonuses are paid monthly on the 10<sup>th</sup> of the following month.**

## **DISCLAIMER**

Join47inc is a direct-to-consumer organization that designs, manufactures, and markets exclusive products. We don't believe in getting rich programs. We believe in hard work, dedication, adding value and serving others. As stipulated by law, we cannot and do not make any guarantees about your ability to get results or to earn any money with our ideas, information, tools, compensation system or strategies. We do not know you and, besides, your results in business are up to you and Solely determined by your efforts, resources, connections, dedication and application. Nothing in this document or on any of our websites is a promise or guarantee of results, or future earnings, and we do not offer any legal, medical, tax, or other professional advice. Any financial numbers referenced here, or on any of our websites, are simply of an educational nature describing how our programs work and should not be considered exact, actual, or as a promise of potential earnings. All numbers are illustrative only. For any concerns beyond the scope of this document, we recommend you seek professional advice.